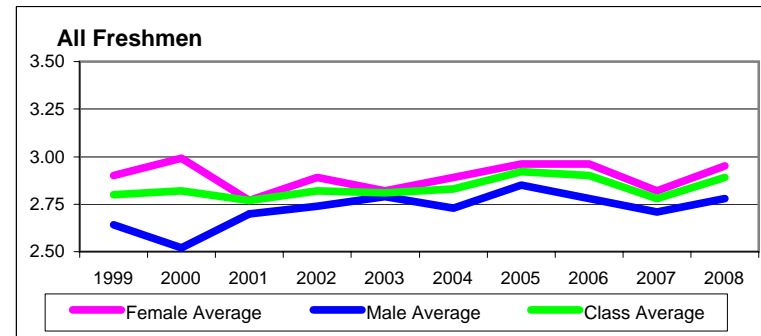
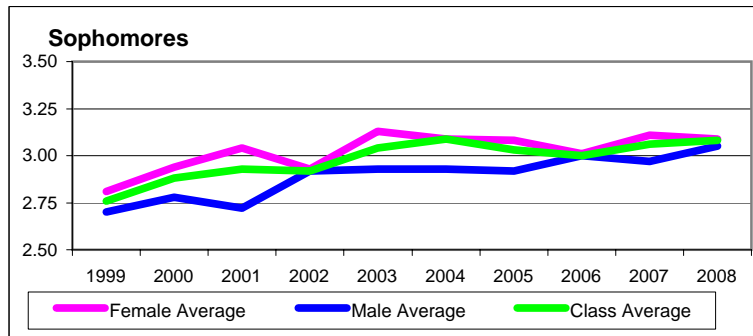
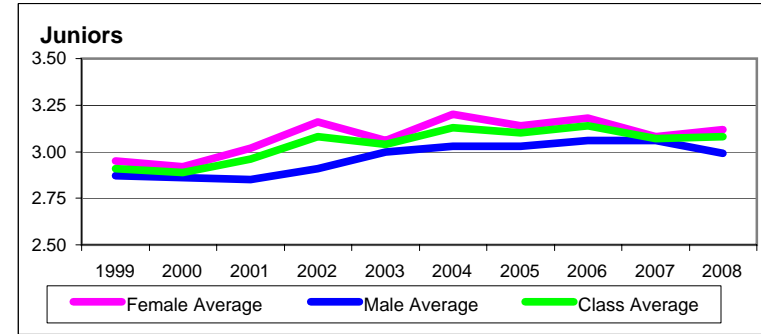
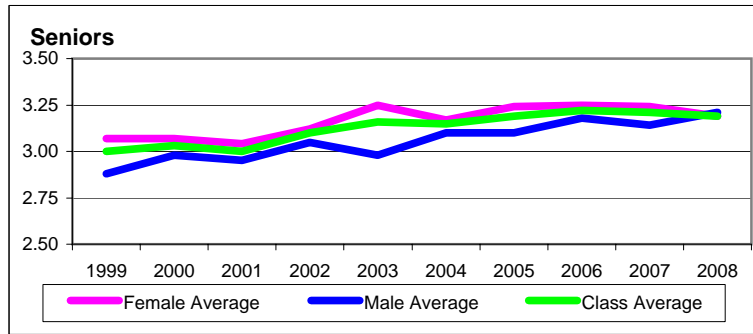


Traditional Undergraduate Cumulative Grade Point Averages: Fall Semester



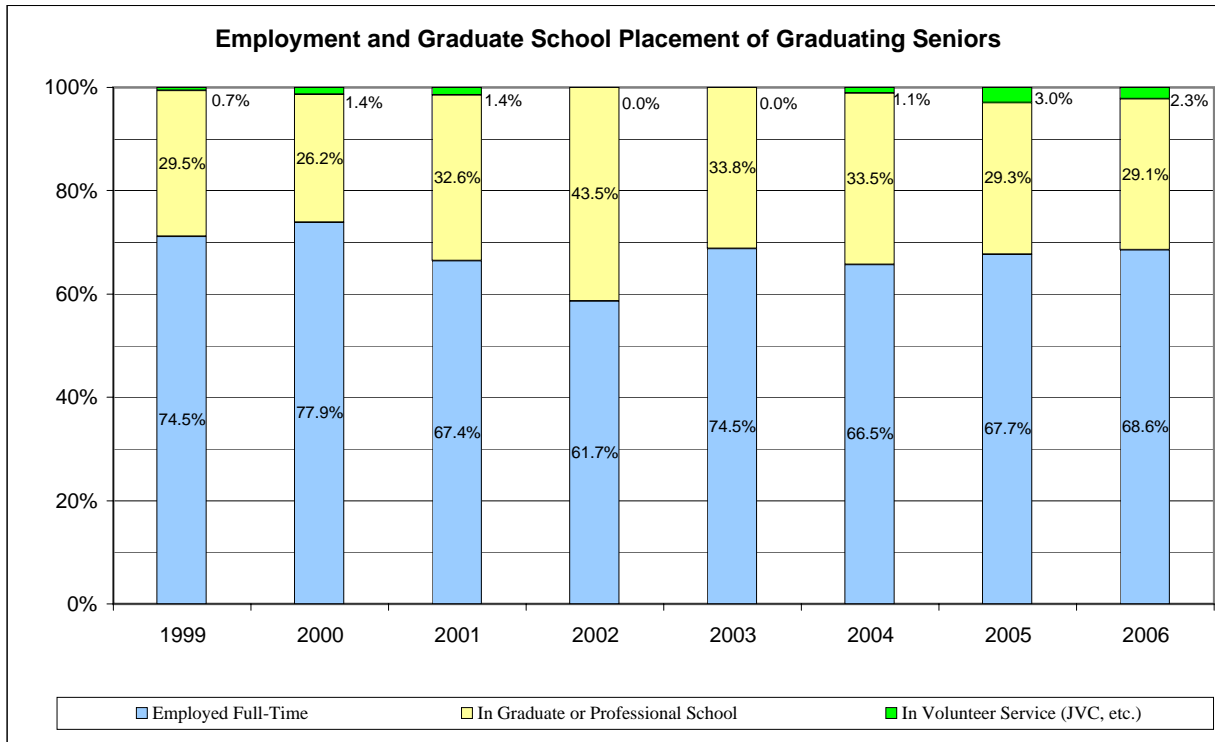
GPA by Class

	Seniors			Juniors			Sophomores			All Freshmen			1st-Time Full-Time Freshmen			All Traditional Undergraduates			
	Female Average	Male Average	Class Average	Female Average	Male Average	Class Average	Female Average	Male Average	Class Average	Female Average	Male Average	Class Average	Female Average	Male Average	Class Average	Female Average	Male Average	Class Average	
1999	3.07	2.88	3.00	2.95	2.87	2.91	2.81	2.70	2.76	2.90	2.64	2.80	2.96	2.71	2.86	2.98	2.82	2.92	1999
2000	3.07	2.98	3.03	2.92	2.86	2.89	2.94	2.78	2.88	2.99	2.52	2.82	3.03	2.61	2.88	3.00	2.88	2.95	2000
2001	3.04	2.95	3.00	3.02	2.85	2.96	3.04	2.72	2.93	2.77	2.70	2.77	2.90	2.82	2.87	3.02	2.87	2.96	2001
2002	3.12	3.05	3.10	3.16	2.91	3.08	2.93	2.92	2.92	2.89	2.74	2.82	3.01	2.78	2.91	3.02	2.87	2.96	2002
2003	3.25	2.98	3.16	3.06	3.00	3.04	3.13	2.93	3.04	2.82	2.79	2.81	2.90	2.88	2.89	3.04	2.90	2.99	2003
2004	3.17	3.10	3.15	3.20	3.03	3.13	3.09	2.93	3.09	2.89	2.73	2.83	2.97	2.78	2.91	3.06	2.91	3.00	2004
2005	3.24	3.10	3.19	3.14	3.03	3.10	3.08	2.92	3.03	2.96	2.85	2.92	3.02	2.95	2.99	3.09	2.96	3.04	2005
2006	3.25	3.18	3.22	3.18	3.06	3.14	3.01	3.00	3.00	2.96	2.78	2.90	3.01	2.85	2.95	3.08	2.97	3.04	2006
2007	3.24	3.14	3.21	3.08	3.06	3.07	3.11	2.97	3.06	2.82	2.71	2.78	2.86	2.73	2.81	3.03	2.91	2.99	2007
2008	3.19	3.21	3.19	3.12	2.99	3.08	3.09	3.05	3.08	2.95	2.78	2.89	3.02	2.80	2.94	3.07	2.96	3.03	2008

NOTE: Due to conversion to a new database in Fall 2002, there may be some inconsistencies between data before and after the 2002 conversion.

Source: Registrar's Office, Institutional Research Office

last updated: 5/13/2009



Counts

	Number in Graduating Class (Traditional Undergraduates)	Number of Survey Respondents	Response Rate	Employed Full-Time	In Graduate or Professional School	Dual Employed and School	In Volunteer Service (JVC, etc.)
1999	209	149	71.3%	111	44	7	1
2000	182	145	79.7%	113	38	8	2
2001	181	138	76.2%	93	45	2	2
2002	202	154	76.2%	95	67	8	0
2003	193	145	75.1%	108	49	12	0
2004	220	176	80.0%	117	59	15	2
2005	179	167	93.3%	113	49	15	5
2006	203	175	86.2%	120	51	5	4

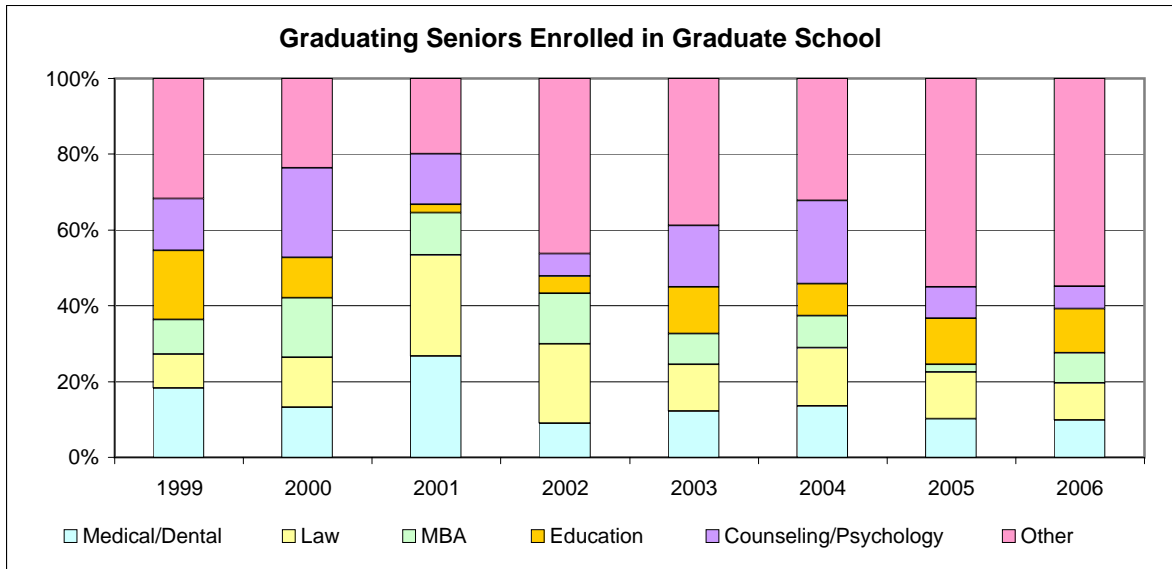
Percentages (of respondents)

	Employed Full-Time	In Graduate or Professional School	Dual Employed and School	In Volunteer Service (JVC, etc.)
1999	74.5%	29.5%	4.7%	0.7%
2000	77.9%	26.2%	5.5%	1.4%
2001	67.4%	32.6%	1.4%	1.4%
2002	61.7%	43.5%	5.2%	0.0%
2003	74.5%	33.8%	8.3%	0.0%
2004	66.5%	33.5%	8.5%	1.1%
2005	67.7%	29.3%	9.0%	3.0%
2006	68.6%	29.1%	2.9%	2.3%

NOTE: "Dual Employed and School" numbers are included in "Employed Full-Time" and "In Graduate or Professional School" counts.

Source: Career Services Office, Institutional Research Office

last updated: 1/22/2008



Number of SHC Graduating Seniors Enrolled in Graduate or Professional Programs

	Medical/Dental	Law	MBA	Education	Counseling/Psychology	Other	Total
1999	8	4	4	8	6	14	44
2000	5	5	6	4	9	9	38
2001	12	12	5	1	6	9	45
2002	6	14	9	3	4	31	67
2003	6	6	4	6	8	19	49
2004	8	9	5	5	13	19	59
2005	5	6	1	6	4	27	49
2006	5	5	4	6	3	28	51

Graduate Enrollments as Percent of All Survey Respondents*

	Medical/Dental	Law	MBA	Education	Counseling/Psychology	Other	Total
1999	5.4%	2.7%	2.7%	5.4%	4.0%	9.4%	29.5%
2000	3.4%	3.4%	4.1%	2.8%	6.2%	6.2%	26.2%
2001	8.7%	8.7%	3.6%	0.7%	4.3%	6.5%	32.6%
2002	3.9%	9.1%	5.8%	1.9%	2.6%	20.1%	43.5%
2003	4.1%	4.1%	2.8%	4.1%	5.5%	13.1%	33.8%
2004	4.5%	5.1%	2.8%	2.8%	7.4%	10.8%	33.5%
2005	3.0%	3.6%	0.6%	3.6%	2.4%	16.2%	29.3%
2006	2.9%	2.9%	2.3%	3.4%	1.7%	16.0%	29.1%

Graduate Enrollments as Percent of Respondents* Enrolled in Graduate or Professional School

	Medical/Dental	Law	MBA	Education	Counseling/Psychology	Other	Total
1999	18.2%	9.1%	9.1%	18.2%	13.6%	31.8%	100.0%
2000	13.2%	13.2%	15.8%	10.5%	23.7%	23.7%	100.0%
2001	26.7%	26.7%	11.1%	2.2%	13.3%	20.0%	100.0%
2002	9.0%	20.9%	13.4%	4.5%	6.0%	46.3%	100.0%
2003	12.2%	12.2%	8.2%	12.2%	16.3%	38.8%	100.0%
2004	13.6%	15.3%	8.5%	8.5%	22.0%	32.2%	100.0%
2005	10.2%	12.2%	2.0%	12.2%	8.2%	55.1%	100.0%
2006	9.8%	9.8%	7.8%	11.8%	5.9%	54.9%	100.0%

* See "Placement Post-Graduation" page for information on graduating class and survey response rates.

Source: Career Services Office, Institutional Research Office
last updated: 1/22/2008